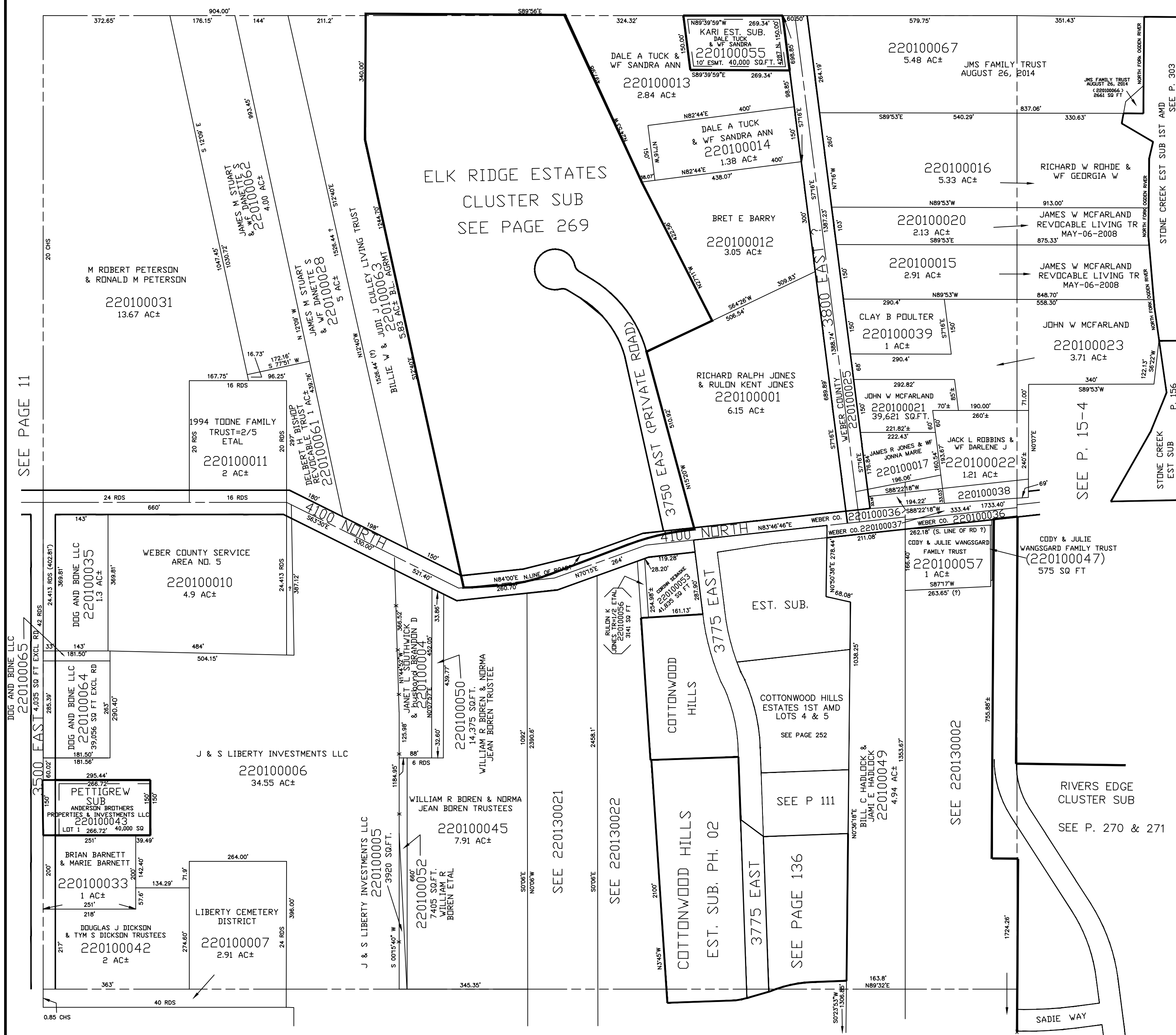


N.E. 1/4  
 SECTION 20, T.7N., R.1E., S.L.B. & M.  
 IN WEBER COUNTY  
 SCALE 1" = 200'  
 SEE PAGE 7

TAXING UNIT: 36



SEE PAGE 13

SEE PAGE 11

SEE P. 15-4

SEE P. 303

P. 156